

Prototype

June 2016

Eat Well, Live Well.



Ajinomoto Health & Nutrition North America, Inc.
4105 Poole Road, Raleigh
North Carolina 27610
Tel: (919) - 233 - 2367

ASC-30-86-1B

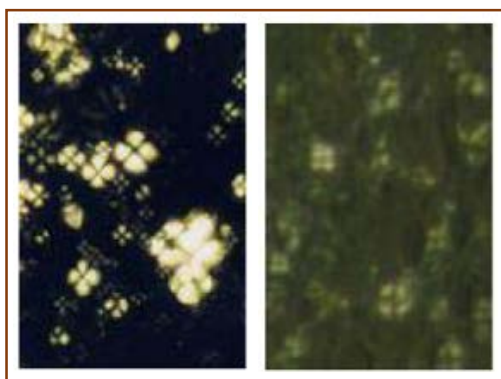
Foundation Stick

Foundation stick contains Ajinomoto's oil gelling agents, **AJK OD2046** (premix of our gelling agents **EB-21** & **GP-1**), which makes the product more stable, provides strength, & does not impact the original sensory feel of the oils. The **Eldews** in this product help nourish the skin by keeping it moisturized. **Eldew SL-205** helps in pigment dispersion & prevents sweating of the pigments, & also provides stability. **Amihope LL** and **Amihope OL**, natural functional powders provide great lubricity to the product. It leaves a silky after-feel. It also provides matte effect, luminous effect & a sheer natural look. It blends well & adheres well to the skin & acts as a perfect canvas for the make up!

	Trade Name	INCI Name	Supplier	% w/w	Role of ingredient
A.	AJK OD2046	Octyl Dodecanol, Dibutyl Lauroyl Glutamide, Dibutyl Ethylhexanoyl Glutamide	Ajinomoto	12.50	Gelling Mixture, Structure
	Candelilla Wax	Euphorbia Cerifera	Frank Ross	1.00	Structure
	Carnauba Wax	Copernicia Cerifera	Spectrum	2.00	Structure
B.	Covanol Yellow ON 1782		Sensient	5.69	Colorant
	Covanol LC381 Eutanol G		Sensient	2.28	Colorant
	Covanol White ON 9787		Sensient	14.12	Colorant, opacifying agent, UV absorber
	Covanol Blue OS 6742		Sensient	0.91	Colorant
C.	Eldew APS-307	Phytosteryl/Decyltetradecyl Myristoyl Methyl Beta-Alanine	Ajinomoto	1.00	Emollient, Moisturizer, Ceramide like activity
	Eldew PS-203R	Phytosteryl/Octyldodecyl Lauroyl Glutamate	Ajinomoto	1.00	Emollient, Moisturizer, Ceramide like activity
	Eldew SL-205	Isopropyl Lauroyl Sarcosinate	Ajinomoto	4.00	Pigment dispersion, Light emollient/ sensory
	Panalane L-14 E	Hydrogenated Polyisobutene	Vantage	4.00	Structure modifier
	Panalane H-300 E	Hydrogenated Polyisobutene	Vantage	1.00	Structure modifier, binding agent
	Cyclomethicone	Cyclomethicone		10.00	Skin conditioner, emollient
	Schercemol GTO Ester	Triethylhexanoin	Lubrizol	3.00	Skin conditioner
	Isododecane	Isododecane		6.00	Emollient
	Isosorbide Dicaprylate	Isosorbide Dicaprylate		4.00	Skin moisture retention
D.	Amihope LL	Lauroyl Lysine	Ajinomoto	8.00	Coverage, Glide, Matte Effect, Moisturizer
	Amihope OL	N-Capryloyl Lysine	Ajinomoto	4.00	
	Ultrapure Zinc Oxide	Zinc Oxide	Ultra	5.00	UV protection, Binder
	Talc			2.50	Binder
	Gransil AM-18	Bis-stearyl Dimethicone	Grant	4.00	Emollient, Spread ability enhancer
	Anhydrous Fumed silica		Evonik	1.00	Absorbent, Bulking Agent, Opacifier
E.	Vit E acetate	Vit E acetate		0.60	Antioxidant
	Octisalate	Ethylhexyl Salicylate	Spectrum	2.00	U.V Filter
	Fragrance - Dozen Roses		Labermuth	0.20	Fragrance
	Fragrance - Rose Petals		Labermuth	0.20	Fragrance

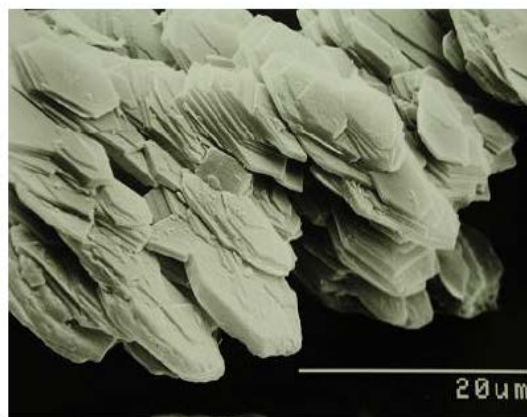
Procedure:

- (1) Heat and mix Phase A at 95 – 105 °C.
- (2) Mix Phase B and form the foundation shade. Add it to phase A while mixing at 95 °C.
- (3) Gradually add phase C and mix at 95 °C.
- (4) Blend Zinc Oxide and Talc to reduce particle size before adding. Add phase D and mix at 95 °C.
- (5) Add phase E and mix at 85 °C.
- (6) Pour in the packaging and replace the cap once cooled to R.T



Ceramide

Eldew PS-203R

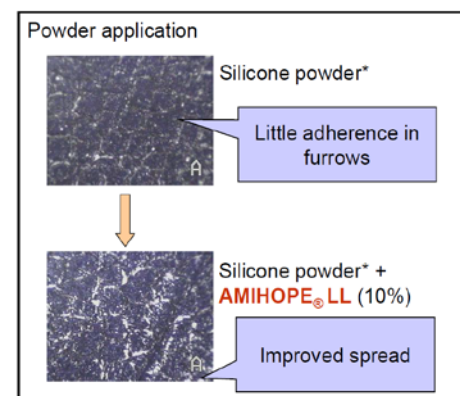


Amihope LL / OL Hexagonal Crystal Structure



Artificial Leather

*(Dimethicone/Vinyl dimethicone) Crosspolymer



Amihope LL Long lasting effect

TDS: 1015-0662, 0501-0120, Catalogue data

Oct. 2018 rev.

Disclaimer: This information is presented in good faith and we believe that it is correct, but no warranty as to accuracy of results or fitness for particular use is given, not is freedom from patent infringement to be inferred. It is offered solely for information.

Before using any Ajinomoto product, or any product mentioned in this literature: read, understand and follow the information contained in the most recent Material Safety Data Sheet.